

EDGE 4X™ Rotary Stage Evaluation Kit

User Guide



Copyright

Copyright © 2012 by Nanomotion Ltd.

All rights reserved worldwide. No part of this publication may be reproduced, modified, transmitted, transcribed, stored in retrieval system, or translated into any human or computer language, in any form or by any means, electronic, mechanical, magnetic, chemical, manual, or otherwise, without the express written permission of Nanomotion Ltd., Mordot HaCarmel Industrial Park, Yokneam, 20692, Israel.

This document contains proprietary information and shall be respected as a proprietary document with permission for review and usage given only to the rightful owner of the equipment to which this document is associated.

Limited Warranty

Nanomotion Ltd. (hereinafter NM) warrants the product (other than software) manufactured by it to be free from defects in material and workmanship for a period of time of one year (except those parts normally considered as consumable/expendable components such as motor conditioning brushes). The warranty commences thirty (30) days from the date of shipment.

NM warrants those parts replaced under warranty for a period equal to the remaining warranty coverage of the original part.

NM's sole and exclusive obligation under this warranty provision shall be to repair, or at its sole option exchange defective products or the relevant part or component, but only if: (i) the Purchaser reports the defect to NM in writing and provides a description of the defective product and complete information about the manner of its discovery within ten (10) days of its discovery; (ii) NM has the opportunity to investigate the reported defect and to determine that the defect arises from faulty material, parts or workmanship; and (iii) the Purchaser returns the affected product to a location designated by NM. These provisions constitute the exclusive remedy of the Purchaser for product defects or any other claim of liability in connection with the purchase or use of NM products.

This warranty policy applies only to NM products purchased directly from NM or from an authorized NM distributor or representative.

This warranty shall not apply to (i) products repaired or altered by anyone other than those authorized by NM; (ii) products subjected to negligence, accidents or damage by circumstances beyond NM control; (iii) product subjected to improper operation or maintenance (i.e. operation not in accordance with NM Installation Manuals and/or instructions) or for use other than the original purpose for which the product was designed to be used.

NM shall not in any event have obligations or liabilities to the Purchaser or any other party for loss of profits, loss of use or incidental, increased cost of operation or delays in operation, special or consequential damages, whether based on contract, tort (including negligence), strict liability, or any other theory or form of

Introduction

action, even if NM has been advised of the possibility thereof, arising out of or in connection with the manufacture, sale, delivery, use, repair or performance of the NM products. Without limiting the generality of the preceding sentence, NM shall not be liable to the Purchaser for personal injury or property damages.

Patent Information

Nanomotion products are covered under one or more of the following registered or applied for patents.

5,453,653; 5,616,980; 5,714,833; 111597; 5,640,063; 6,247,338; 6,244,076; 6,747,391; 6,661,153; 69838991.3; 6,384,515; 7,119,477; 7,075,211; 69932359.5; 1186063; 7,211,929; 69941195.5; 1577961; 4813708; 6,879,085; 6,979,936; 7,439,652; 7061158 ;1800356; 1800356; 1800356; 2007-533057 (pending); 2011-093431 (pending); 7,876,509; 10-2007-7009928 (pending); 200780019448.6 ; 7713361.9 (pending); 12/294,926 (pending); GB2008000004178 (pending); GB2009000003796 (pending); 12/398,216 (pending); GB2446428; 12/517,261 (pending); 08702695.1 (pending); 10-2009-7017629 (pending); 12/524,164 (pending); 12/581,194 (pending)

Contact Information

Website:

www.nanomotion.com

Customer Service

Contact your local distributor or email Nanomotion Ltd. Technical Support Department at techsupport@nanomotion.com, with detailed problem description, additions, corrections or suggestions.

Nanomotion Ltd. Worldwide Headquarters

Mordot HaCarmel Industrial Park
HaYetsira Street, PO Box 623
Yokneam 20692
Tel: +972-73-249-8000
Fax: +972-73-249-8099
Email: nano@nanomotion.com

Nanomotion Inc - US Headquarters

1 Comac Loop, Suite 14B2
Ronkonkoma
NY 11779
Tel: +1-800-8216266
Fax: +1-631-5851947
Email: nanoUS@nanomotion.com

Introduction

Revision History

The revision history shows the last four revisions to this document. The last revision is shown first.

Revision	Release date	Details
01	July 2014	First draft

Introduction

Table of Contents

Introduction..... 6

Overview of the EDGE 4X Rotary Stage Evaluation Kit..... 7

 ED4R ROTARY STAGE Evaluation Kit Motion Module 8

Evaluating ED4R ROTARY STAGE Operations..... 9

Introduction

The ED4R Rotary Stage™ Evaluation Kit provides a pre-assembled motion module. The motion module includes:

- EDGE 4X-Rotary Stage – driven by two EDGE 4X Piezo motors
- EDGE 4X Controller/Driver
- Power supply and communication card

The evaluation kit includes the Nanomotion XCD Commander for communication with the Controller/Driver. The user can operate the stage in open loop using the XCD Commander, or write programs in the Nanomotion XMS script for operation in closed loop.

Related Products

Product	Part Number
ED4R ROTARY STAGE Rotary	EDGR450100-00
EDGE 4X Controller/Driver	S833150200-00

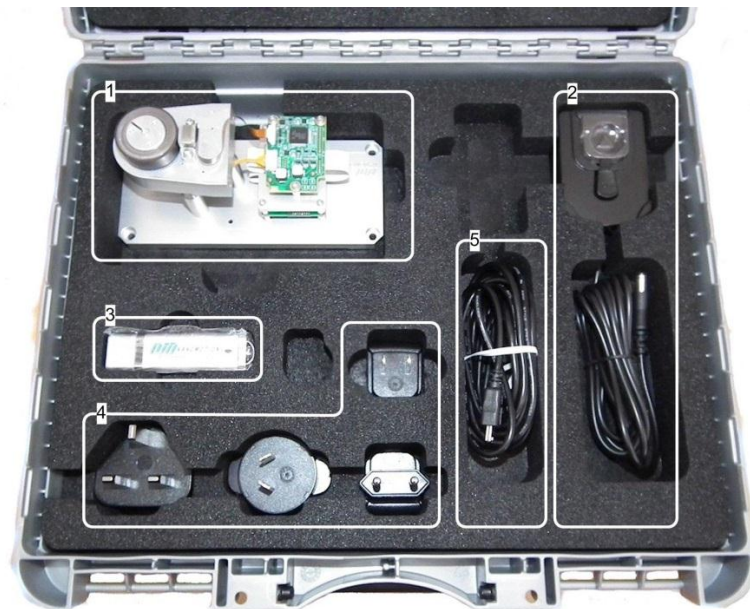
Related Documentation

Document	Document Number
XCD™ Software version 1.5.0.7	XCD0458002-00
EDGE 4X Controller/Driver User Manual	S833458000-00

Overview of the EDGE 4X Rotary Stage Evaluation Kit

The ED4R ROTARY STAGE™ Evaluation Kit provides the ability to operate and evaluate the Nanomotion rotary motor in a closed or open loop. The Evaluation Kit consists of the motor assembled on a Motion Module, an XCD driver board, and a communication board.

The ED4R ROTARY STAGE Evaluation is supplied in a hard plastic case containing all physical equipment and software required to operate the system.



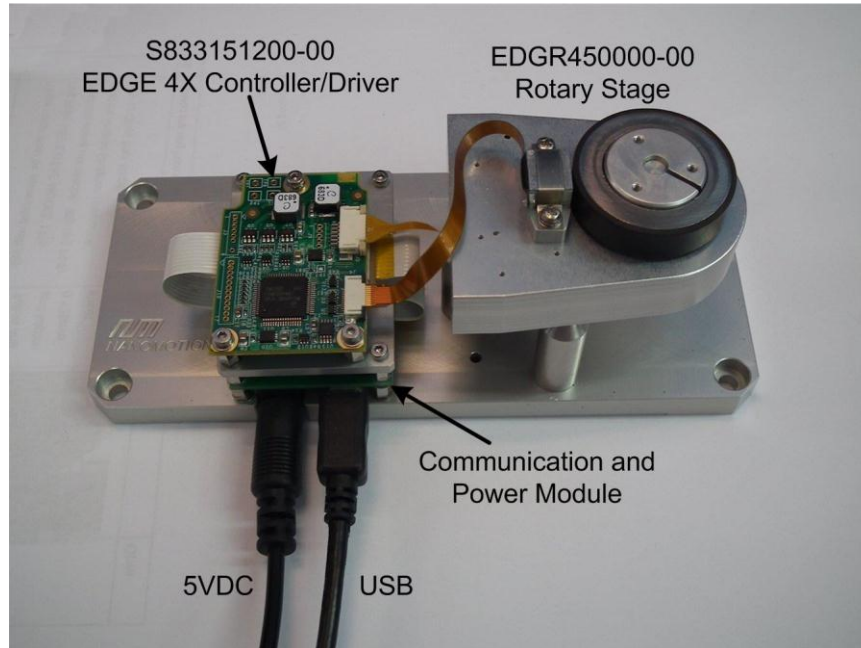
ED4R ROTARY STAGE Evaluation Kit Contents

ED4R ROTARY STAGE Evaluation Kit contents

1	Motion Module – ED4R Rotary Stage with Power Supply and Driver
2	5 VDC power supply – includes international adapters for 110/220 VAC power
3	Disk-on-key <ul style="list-style-type: none"> • XCD Commander Version 1.5 installer • XCD Software Version 1.5.0.7 User Manual • Scripts – contains a backup of the Config_file.s19 file • S833458000-00 EDGE 4X Controller/Driver UM
4	International mains power adapters
5	USB cable - 1.5m length

ED4R ROTARY STAGE Evaluation Kit Motion Module

The Motion Module is a complete motion control system assembled on a rigid jig. The figure below shows the Evaluation Kit Motion Module and its components.



ED4R ROTARY STAGE Evaluation Kit Motion Module

Evaluating ED4R ROTARY STAGE Operations

The XCD Commander version 1.5.0.7 provides a means of running sample motion control scripts on the motion module. New scripts (*.xms) can be written to test application specific operations.

1. Insert the Evaluation Kit Disc-on-key into a USB connection on the computer.
2. Locate the XCD Software (...\\XCD_1.5\\Nano 1.5.0.7\\InstallationDisk) and copy the folder to the computer.
3. In the folder **InstallationDisk** double click on setup.exe to install the XCD Commander.

When the installer finishes it will launch XCD Commander. Because there is no Driver connected at this time a **No Communication Warning** is displayed. XCD Commander must be installed before connecting the Motion Module.

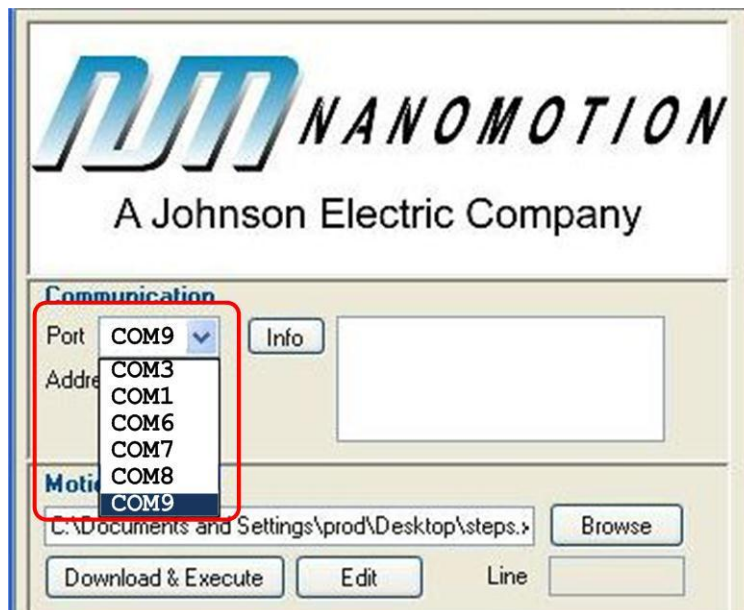
4. Click OK and the XCD Commander window opens. Close the XCD Commander.
5. Place the Motion Module on a flat stable surface.
6. Connect the communication card to a computer with the USB cable. There are two options for connecting.
 - Connecting to a computer with the XCD Commander software, use a communications adapter card.
 - Connecting directly to the end user's Host, direct connection is possible.
7. Connect the communication board to the external +5 VDC power supply.



The external power supply has a set of 110/220 VAC international adapters for connection to mains.

8. Launch XCD Commander.
9. In the Communication pane open the **Port** drop-down menu.
10. Locate a sequence of four consecutive numbers and select the fourth number in the sequence.

The dropdown menu displays many numbers, but only four will be consecutive. In the following figure the four number sequence is COM6, COM7, COM8, and COM9. Select COM9.



Four Number Sequence in Port Dropdown Menu

11. In the **Address** field select **A4**.
12. To confirm successful communication click **Info**.

The **Info** field displays the Controller and application information:

- Controller version and build
- Controller serial number
- Code
- Controller/Driver type and mode



Ensure that the Controller version is the same as the XCD Commander version shown in the window header.
For example, Controller version 1.5.0.7 and XCD Commander 1.4

13. The XCD Commander application is ready for use.

Refer to the **XCD Software 1.5.0.7 User Manual** for additional setup and detailed operating instructions. The manual contains:

- Overview of Nanomotion motor control
- XCD Commander installation, setup, and operating instructions
- XCD Motion Software syntax, commands, parameters, and values
- Communication Protocol description with syntax and command tables



The Controller/Driver supplied with the evaluation kit has a configuration file already programmed in Flash memory. If the configuration file is accidentally deleted copy the file .../Disk-on-Key/Scripts/Config_file.S19 to Flash memory.
