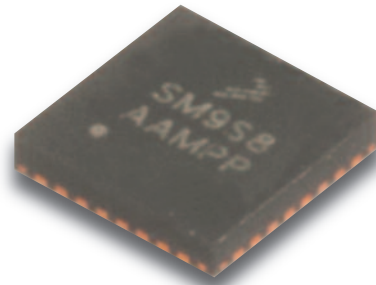


ASIC-1E-00

ASIC Component

Application Recommendations

- Auto Focus/Zoom Modules
- Shutter & Aperture Control
- Filter Changers
- Pan and Tilt Modules



ORDERING INFORMATION

Part Number: ASIC-1E-00
ASIC Driver For 1 EDGE Motor

Part Number: ASIC-1E-01
ASIC Controller Driver For S787
Shutter

Part Number: ASIC-E2-00
ASIC Driver For 2 Axis EDGE
Motors

RELATED PRODUCTS/ ACCESSORIES

Part Number: EM1-S-0
EM1-V-0

Product Description

Nanomotion's ASIC controller/driver component can support the Edge motor and Edge based modules working in either the traditional AB1A mode or in AB5 mode (linear voltage to velocity profile). The AB1A mode supports up to two motors in parallel, doubling the force output.

The ASIC component can be provided for integration in customer electronics and supports open loop operation, as a driver only or closed loop operation based on Nanomotion's proprietary analog position sensor.

The ASIC driver board is configured for open loop, driver operation only.

MECHANICAL DRAWINGS AND INTERFACE

TECHNICAL SPECIFICATIONS

Mechanical
 Package: 32-pin QFN,
 5mm x 5mm height 1.2mm

Functional:
 Controller/Driver, or driver only
 Motors supported: up to 2 EDGE
 motors
 Drive mode : AB5 , AB1
 IIC interface at max 100 KHz
 3 OPAMPs inputs
 2 A/D inputs

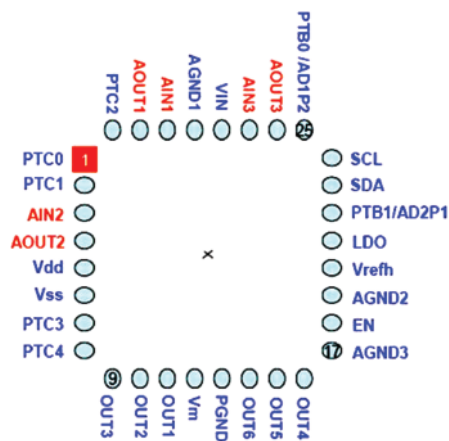
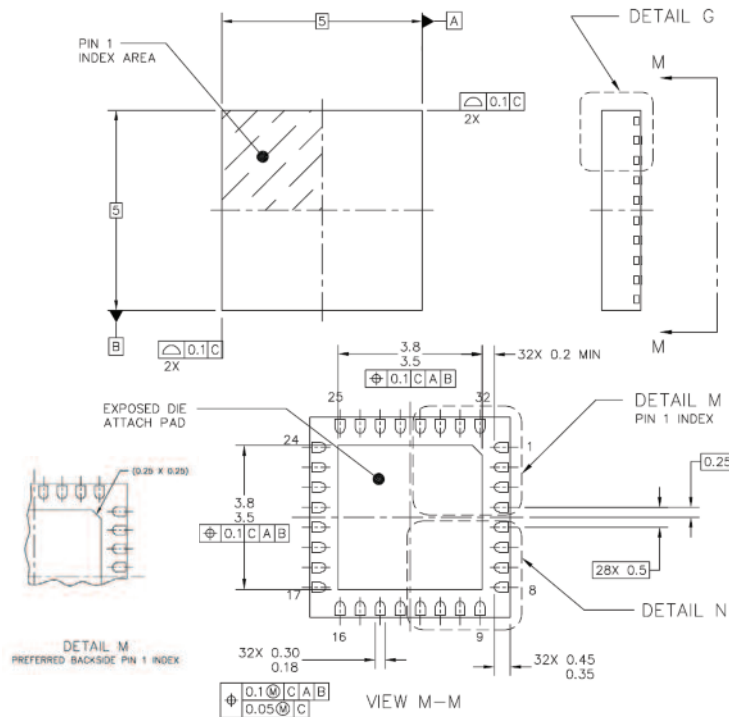
ELECTRICAL

Supply voltage:
 2.7V to 4.2V
 25ua leakage current at sleep
 mode (at 3.7V)

ENVIRONMENTAL

Operating Temperature:
 -40°C – 85°C

ELECTRICAL INTERFACE



Nanomotion Ltd. Worldwide Headquarters

Mordot HaCarmel Industrial Park
 Yokneam 20692 Israel
 t: +972 73 2498000
 f: +972 73 2498099
 e: nano@nanomotion.com

Nanomotion Inc. U.S. Headquarters

1 Comac Loop, Suite 14B2
 Ronkonkoma, New York 11779
 t: (800) 821-6266
 f: (631) 585-3000
 e: nanoUS@nanomotion.com